

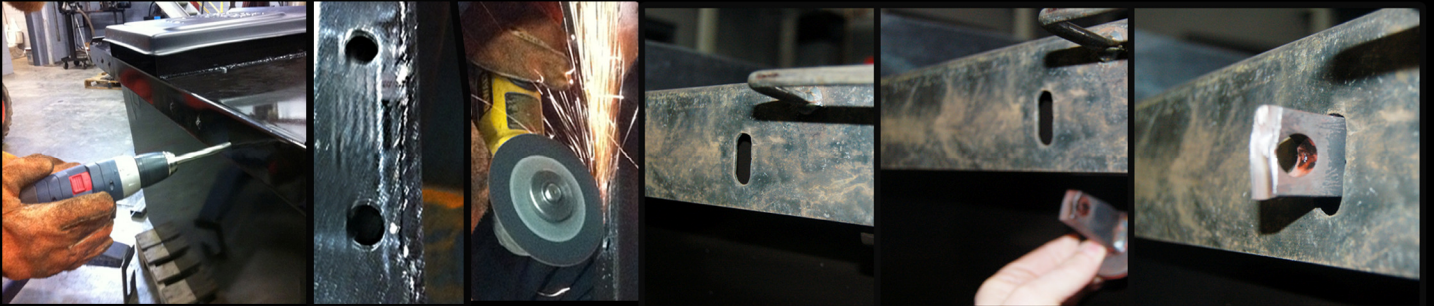
# **EZ** INSTALL FOLDING LID **ONKENS** FROM INCORPORATED



When folding lid over after cutting locking tab slots, be sure there is enough clearance for the lid to easily fold over and that the locking tabs do not catch on the edge of the bin channel. Once it is determined that there are no issues with tab clearance, the lid is ready to be locked.

## Installation of front locks:

Your EZ install lid has up to 3 locking pins that may be installed. Mark and cut matching slots in the front of bin in the same way you cut the slots in the top, once finished, the pins can be installed from the front or rear of the slots and locks installed on front or on the back depending on your preference.



For questions concerning installation,  
call Onkens @ 309.562.7271

**ONKENS**  
INCORPORATED  
[WWW.ONKENS.NET](http://WWW.ONKENS.NET)

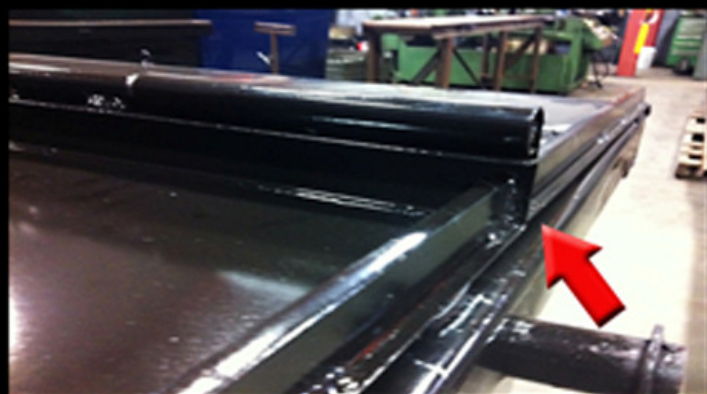


# F-7 INSTALL FOLDING LID **ONKEN**

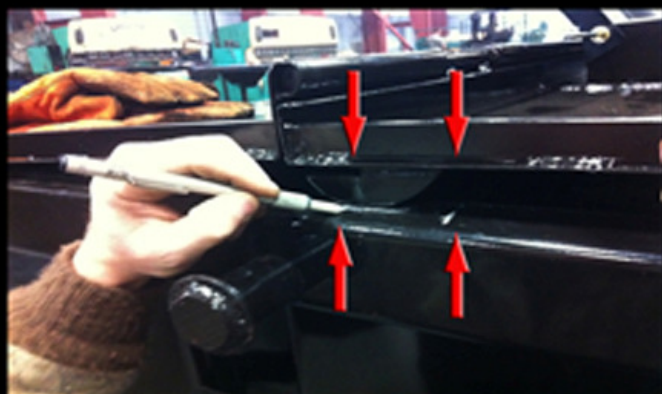
FROM **ACCELERATED**



Begin by centering lid on bin with hinge plates to the back of the bin. Drill 2 1/2" holes and use a 3/8" bolt to secure lid.



After securing lid, unfold and use a straight edge to ensure the front and rear sections of the lid are lined up for proper slot cutting placement.



Once lid is aligned, mark the length of the hole to be cut for locking tab to drop into, being sure to use the tab as a guide.



After marking both sides, use a block to hold the ez install lid up and out of the way for cutting the locking tab slots.



To cut locking tab slot, first drill 2 pilot holes (#1) and then use a 1/2" bit to finish the holes. (#2) After drilling, (#3) use a cordless cutoff wheel (#4) to cut out the remaining material leaving a 1/2" wide slot (#5) for the locking tab to enter the bin channel. Fold lid back over and check for clearance. If needed trim additional material from slot to make sure tab slides easily in when closing lid.